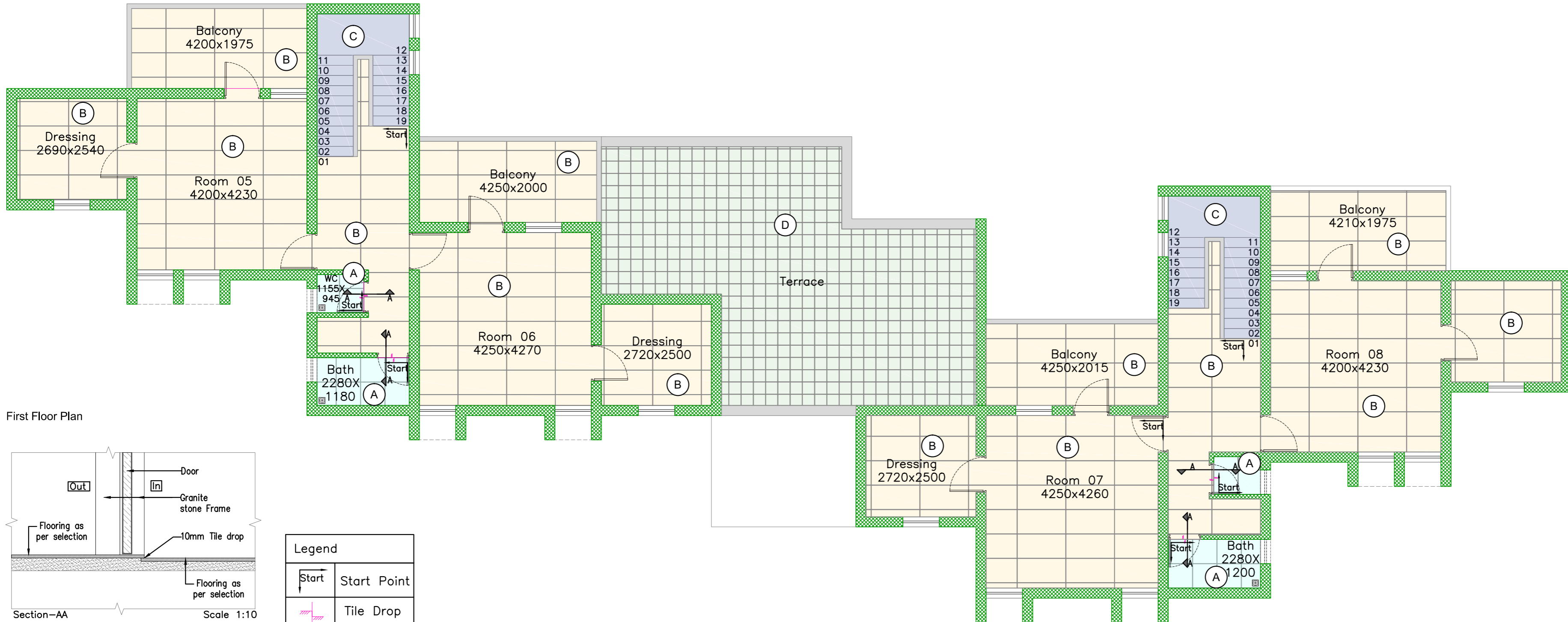
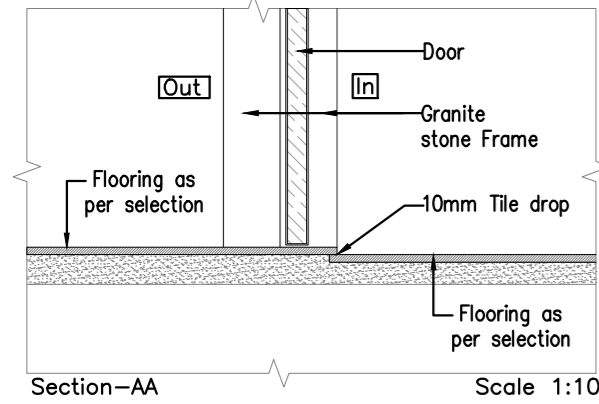


Ground Floor Plan



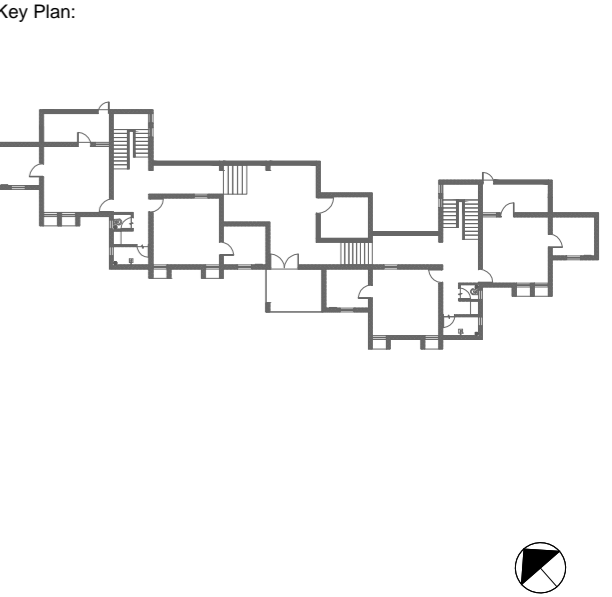
First Floor Plan



Legend	
	Start Point
	Tile Drop

Legend for Flooring		
(A)		Vitrified Tile (600x600mm)
(B)		Vitrified Tile (1200x600mm)
(C)		Granite Stone
(D)		Vitrified Tile (300x300mm) (Heat resistance Tile)
Matt Finish Vitrified Tile		

RO	19-05-25	SC/PR	GMDC	Tender	KBP
Rev	Date	Issued	Issued to	Issued for	Author



Project: GMDC Township Development

Drawing: Flooring Layout  
Hostel/Old VTC Building  
Sheet 01

Drawing Code: 2310\_INT\_TD\_HOS\_FLR\_R0

Print Size: A2 | Scale: 1:80

File Title: 2310\_INT\_TD\_HOS\_FLR\_R0

Project Code: MSA 2310	Project Type: Arc	Location: Ambaji
Print Date: 19-May-25	Drawn By: M Panchal	Checked By: K Chavda
		Approved By: M Shah

MAMTA SHAH & ASSOCIATES  
Architects & Interior Designers  
C-12, Chanakyapuri Society,  
Chanakyapuri Char Rasta,  
New Sama Road, Baroda  
Ph. No. +91 265 2712687 / 2710967  
mamta@msain.com / www.msain.com

Client: Gujarat Mineral Development Corporation